

PROPOSED RESIDENTIAL DEVELOPMENT 2-10 LEICESTER AVENUE, STRATHFIELD STORMWATER CONCEPT DESIGN



DRAWINGS LIST			
SHEET No.	DWG No.	TITLE	REV
1	SW100	COVER SHEET	0
2	SW200	STORMWATER CONCEPT DESIGN - BASEMENT & PLAN - SHEET 1 OF 2	0
3	SW201	STORMWATER CONCEPT DESIGN - BASEMENT & PLAN - SHEET 2 OF 2	0
4	SW202	STORMWATER CONCEPT DESIGN - GROUND FLOOR PLAN - SHEET 1 OF 2	0
5	SW203	STORMWATER CONCEPT DESIGN - GROUND FLOOR PLAN - SHEET 2 OF 2	0
6	SW204	STORMWATER CONCEPT DESIGN - LEVEL 1 PLAN	0
7	SW205	STORMWATER CONCEPT DESIGN - ROOF PLAN	0
8	SW300	STORMWATER CONCEPT DESIGN - DETAILS SHEET -SHEET 1 OF 2	0
9	SW301	STORMWATER CONCEPT DESIGN - DETAILS SHEET -SHEET 2 OF 2	0
10	SW400	EROSION AND SEDIMENT CONTROL - PLAN AND DETAILS	0
11	SW500	STORMWATER CONCEPT DESIGN - MUSIC CATCHMENT PLAN	0

LOCALITY PLAN
NOT TO SCALE
COPYRIGHT OF GOOGLE MAPS

PREPARED BY:

SGC Consulting Engineers
Suite 5.03, Level 5
156 Pacific Highway
St. Leonards, NSW 2065
T : +61 2 8883 4239
Email: office@sgce.com.au
Web: www.sgce.com.au

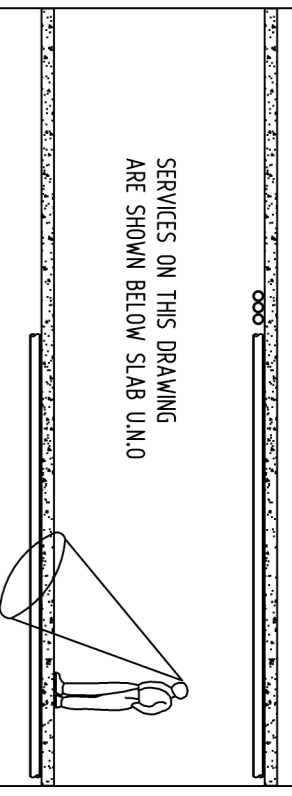


ARCHITECT:

SJB
ARCHITECTS

CLIENT:

LEICE PTY LTD



SUBSOIL DESIGN CALCS:

THERE IS NO UNCOVERED AREA DRAINS TO BASEMENT.

THEREFORE PROVIDE A 6.0m² PUMP OUT PIT TO COMPLY MINIMUM REQUIREMENT 3.0m² ACCORDING TO AS/NZS 3500.3.

PUMP-OUT PIT NOTE:

INSTALL WITH THE FOLLOWING ITEMS:

- 900x50 HEAVY DUTY STEEL GRATED LD FOR ACCESS AND MAINTENANCE PURPOSES.
- CONCRETE SPACE FOR ABOVE PUMP OUT PIT FOR PUBLIC SAFETY AND HANDLING.
- 1500mm DEEP CONCRETE WALLS.
- PUMP-OUT PIT CONTROL BOX (CIB) TO BE CONFORMED WITH ARCHITECT.
- PUMPS TO OPERATE IN ALTERNATE MODE TO INCREASE LIFESPAN.
- INSTALL VISIBLE FLASHING LIGHT SYSTEM IN CASE OF PUMP FAILURE.
- INSTALL 1x MAIN 550/22/80 A/F/T/50 OR FROM ZENIT WATER SOLUTIONS OR SIMILAR 3 PHASE PUMPS WITH 0L/s OUTFLOW FOR 50m HEAD

GRADING NOTE:

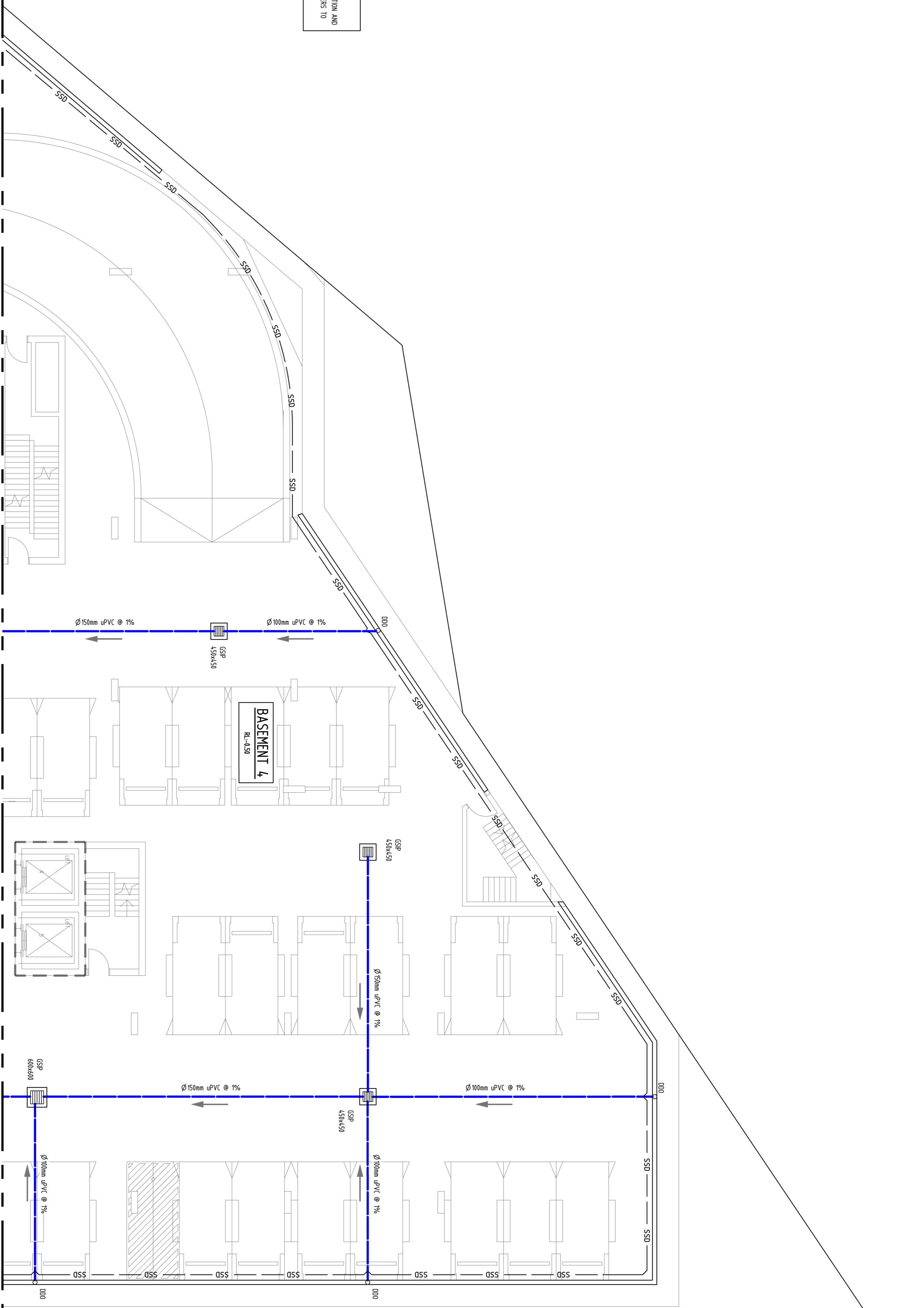
SLAB TO BE GRADED TO RWDS & GSPs AT 1% GRADE MINIMUM TO AS 2890 REQUIREMENTS.

GEO-TECHNICAL NOTE:

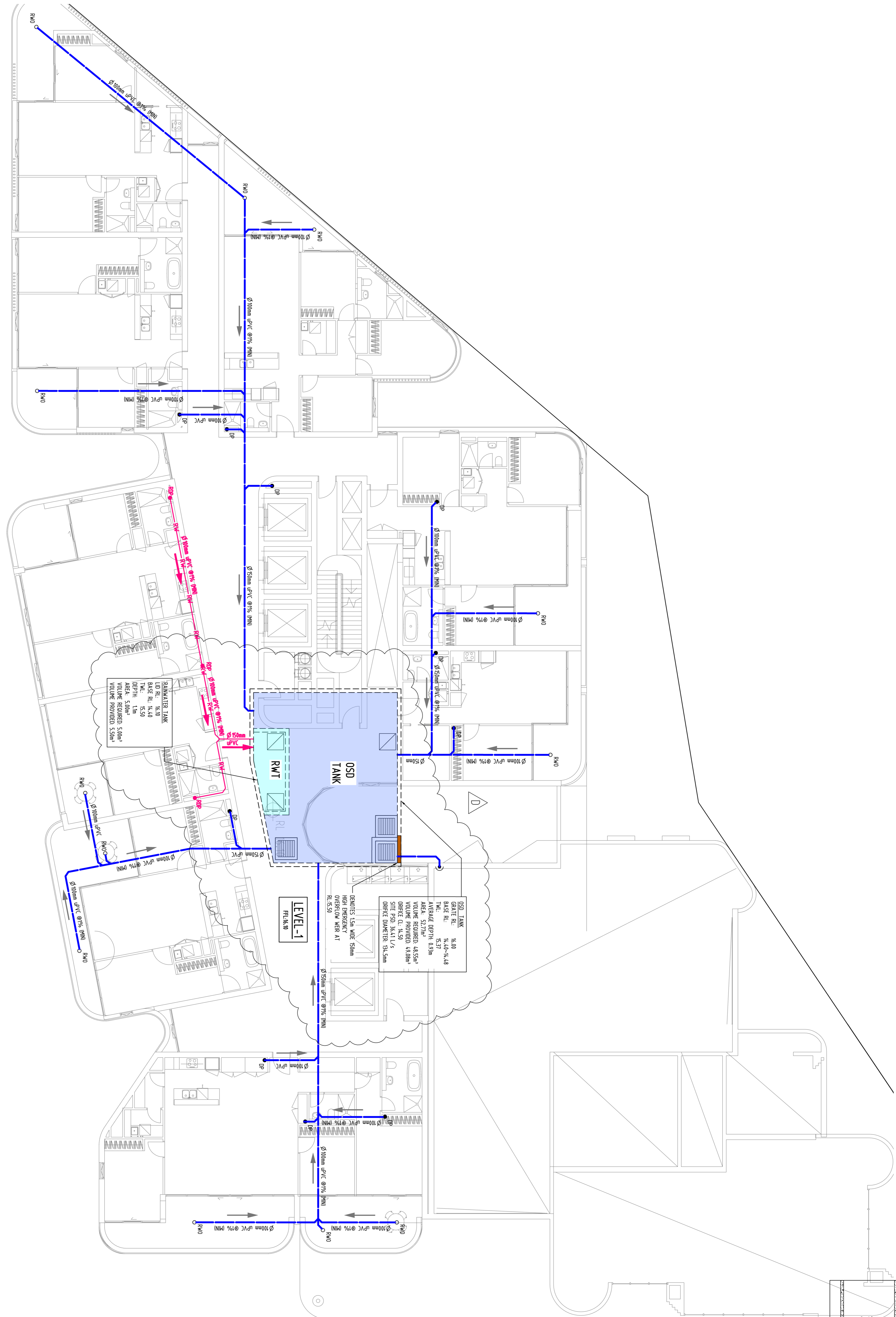
BASEMENT DRAINAGE DESIGN SUBJECT TO GEOTECHNICAL INVESTIGATION AND STRUCTURAL DESIGN OF WALLS AND SLABS. GEOTECHNICAL ENGINEERS TO CONFIRM WATER TABLE LOCATION AND RATE OF SEEPAGE.

PUMP NOTE

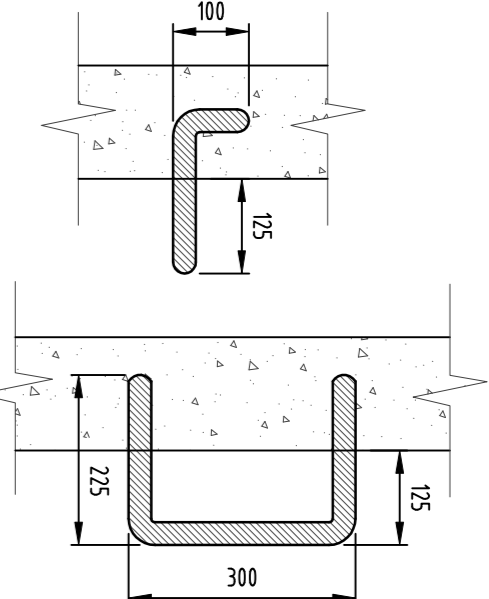
ALL STORMWATER PUMPS TO BE CLASS 1 ZONE 2 PLUMB SAFE TO ELECTRICAL CONSULTANT'S REQUIREMENTS.



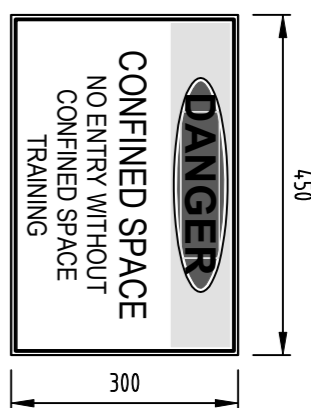
Reference Coordination Drawing										QUALITY CONTROL										CLIENT										ARCHITECT										PROJECT										Drawing Status																																																																																																																																																																																																																																																																																																																																																																																																																																																																																																																																																																																																																																																																																																																																																																																																																																																																																																																																																																																																																																																																																																																																																																																																																																																																																																																																																																																																																																																																																																																																																																																																																																																																																																																																																																																																																																																																																																																																																																																																																																																																																																																																																																																																																																																																																																																																																																																																																																																																																																																																																																																																																																																																																																																																																																																																																																																																																																																																																																																																																																																																																									
Description										DRAWN										NS										DATE										22.07.21										WARNING: THE DESIGN, DRAWING, SPECIFICATIONS AND PROPERTY OF THIS DOCUMENT ARE THE PROPERTY OF LEICE PTY LTD AND MUST BE KEPT IN CONFIDENTIALITY. THE COPYRIGHT HEREIN REMAINS THE SOLE INTELLECTUAL PROPERTY OF LEICE PTY LTD. NO PART OF THIS DOCUMENT IS TO BE REPRODUCED OR TRANSMITTED IN ANY FORM OR BY ANY MEANS, WITHOUT THE WRITTEN CONSENT OF SJB CONSULTANTS PTY LTD.										Scale										1mm = 1:1000 SCALE 1:1000 ON ORIGINAL SIZE										Grid										Drawing Title										NOT TO BE USED FOR CONSTRUCTION PURPOSES										Drawing No										20200252										Revision No										D																																																																																																																																																																																																																																																																																																																																																																																																																																																																																																																																																																																																																																																																																																																																																																																																																																																																																																																																																																																																																																																																																																																																																																																																																																																																																																																																																																																																																																																																																																																																																																																																																																																																																																																																																																																																																																																																																																																																																																																																																																																																																																																																																																																																																																																																																																																																																																																																																																																																																																																																																																																																																																																																																																																																																																																																																																																																																																																																																																																															
Rev.										CHECKED										SH										DATE										22.07.21										156 PACIFIC HIGHWAY ST. LEONARDS, NSW 2065 T: +61 2 8883 4239 Email: office@sgcc.com.au Web: www.sgcc.com.au										A.B.N. 21 118 222 530										Sheet										Scale (at original size)										1:100 @ A1										Project No										20200252										Drawing No										SW200										Revision No										D																																																																																																																																																																																																																																																																																																																																																																																																																																																																																																																																																																																																																																																																																																																																																																																																																																																																																																																																																																																																																																																																																																																																																																																																																																																																																																																																																																																																																																																																																																																																																																																																																																																																																																																																																																																																																																																																																																																																																																																																																																																																																																																																																																																																																																																																																																																																																																																																																																																																																																																																																																																																																																																																																																																																																																																																																																																																																																																																																																																					
1- Preliminary										2- Development application										3- Construction certificate										4- Final										1- Design										2- Issue										3- Construction certificate										4- Final										1- Design										2- Issue										3- Construction certificate										4- Final										1- Design										2- Issue										3- Construction certificate										4- Final										1- Design										2- Issue										3- Construction certificate										4- Final										1- Design										2- Issue										3- Construction certificate										4- Final										1- Design										2- Issue										3- Construction certificate										4- Final										1- Design										2- Issue										3- Construction certificate										4- Final										1- Design										2- Issue										3- Construction certificate										4- Final										1- Design										2- Issue										3- Construction certificate										4- Final										1- Design										2- Issue										3- Construction certificate										4- Final										1- Design										2- Issue										3- Construction certificate										4- Final										1- Design										2- Issue										3- Construction certificate										4- Final										1- Design										2- Issue										3- Construction certificate										4- Final										1- Design										2- Issue										3- Construction certificate										4- Final										1- Design										2- Issue										3- Construction certificate										4- Final										1- Design										2- Issue										3- Construction certificate										4- Final										1- Design										2- Issue										3- Construction certificate										4- Final										1- Design										2- Issue										3- Construction certificate										4- Final										1- Design										2- Issue										3- Construction certificate										4- Final										1- Design										2- Issue										3- Construction certificate										4- Final										1- Design										2- Issue										3- Construction certificate										4- Final										1- Design										2- Issue										3- Construction certificate										4- Final										1- Design										2- Issue										3- Construction certificate										4- Final										1- Design										2- Issue										3- Construction certificate										4- Final										1- Design										2- Issue										3- Construction certificate										4- Final										1- Design										2- Issue										3- Construction certificate										4- Final										1- Design										2- Issue										3- Construction certificate										4- Final										1- Design										2- Issue										3- Construction certificate										4- Final										1- Design										2- Issue										3- Construction certificate										4- Final										1- Design										2- Issue										3- Construction certificate										4- Final										1- Design										2- Issue										3- Construction certificate										4- Final										1- Design										2- Issue										3- Construction certificate										4- Final										1- Design										2- Issue										3- Construction certificate										4- Final										1- Design										2- Issue										3- Construction certificate										4- Final										1- Design										2- Issue										3- Construction certificate										4- Final										1- Design										2- Issue										3- Construction certificate										4- Final										1- Design										2- Issue										3- Construction certificate										4- Final										1- Design										2- Issue										3- Construction certificate										4- Final										1- Design										2- Issue										3- Construction certificate										4- Final										1- Design										2- Issue										3- Construction certificate										4- Final										1- Design										2- Issue										3- Construction certificate										4- Final										1- Design										2- Issue										3- Construction certificate										4- Final										1- Design										2- Issue										3- Construction certificate										4- Final										1- Design										2- Issue										3- Construction certificate										4- Final										1- Design										2- Issue										3- Construction certificate										4- Final										1- Design										2- Issue										3- Construction certificate										4- Final										1- Design										2- Issue										3- Construction certificate										4- Final										1- Design										2- Issue										3- Construction certificate										4- Final										1- Design										2- Issue										3- Construction certificate										4- Final										1- Design										2- Issue										3- Construction certificate										4- Final										1- Design										2- Issue										3- Construction certificate										4- Final										1- Design										2- Issue										3- Construction certificate										4- Final										1- Design										2- Issue										3- Construction certificate										4- Final										1- Design										2- Issue										3- Construction certificate										4- Final										1- Design										2- Issue										3- Construction certificate										4- Final										1- Design										2- Issue										3- Construction certificate										4- Final										1- Design										2- Issue										3- Construction certificate										4- Final										1- Design										2- Issue										3- Construction certificate										4- Final										1- Design										2- Issue										3- Construction certificate										4- Final										1- Design										2- Issue										3- Construction certificate										4- Final										1- Design										2- Issue										3- Construction certificate										4- Final										1- Design										2- Issue										3- Construction certificate										4- Final										1- Design										2- Issue										3- Construction certificate										4- Final										1- Design										2- Issue										3- Construction certificate										4- Final										1- Design										2- Issue										3- Construction certificate										4- Final										1- Design										2- Issue										3- Construction certificate										4- Final										1- Design										2- Issue										3- Construction certificate										4- Final										1- Design										2- Issue										3- Construction certificate										4- Final										1- Design										2- Issue										3- Construction certificate										4- Final										1- Design										2- Issue										3- Construction certificate										4- Final										1- Design										2- Issue										3- Construction certificate										4- Final										1- Design										2- Issue										3- Construction certificate										4- Final										1- Design										2- Issue										3- Construction certificate										4- Final										1- Design										2- Issue										3- Construction certificate										4- Final										1- Design										2- Issue									



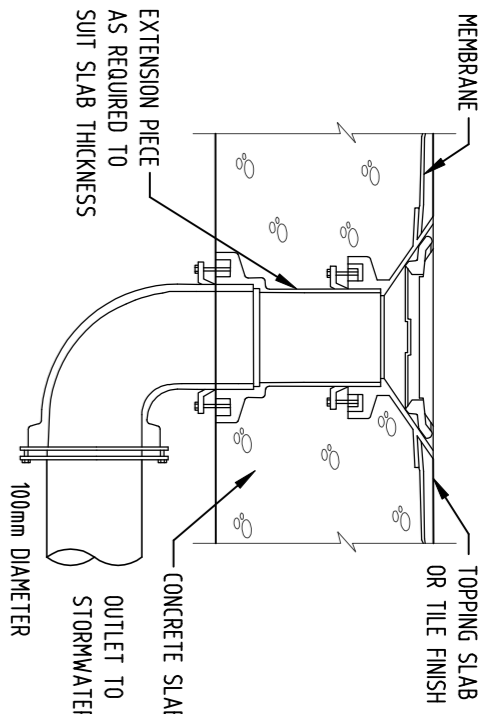
Reference Coordination Drawing									
Issued		Drawing Title and Number		Date		Rev.		ENGINEERS SPECIALIST Professional Engineer Licence No. 123456789	
A		GENERAL ARRANGEMENT		2020/01/01		1		A	
B		SECTION A-A		2020/01/01		1		B	
C		SECTION B-B		2020/01/01		1		C	
D		SECTION C-C		2020/01/01		1		D	
E		SECTION D-D		2020/01/01		1		E	
F		SECTION E-E		2020/01/01		1		F	
G		SECTION F-F		2020/01/01		1		G	
H		SECTION G-G		2020/01/01		1		H	
I		SECTION H-H		2020/01/01		1		I	
J		SECTION I-I		2020/01/01		1		J	
K		SECTION J-J		2020/01/01		1		K	
L		SECTION K-K		2020/01/01		1		L	
M		SECTION L-L		2020/01/01		1		M	
N		SECTION M-M		2020/01/01		1		N	
O		SECTION N-N		2020/01/01		1		O	
P		SECTION O-O		2020/01/01		1		P	
Q		SECTION P-P		2020/01/01		1		Q	
R		SECTION Q-Q		2020/01/01		1		R	
S		SECTION R-R		2020/01/01		1		S	
T		SECTION S-S		2020/01/01		1		T	
U		SECTION T-T		2020/01/01		1		U	
V		SECTION U-U		2020/01/01		1		V	
W		SECTION V-V		2020/01/01		1		W	
X		SECTION W-W		2020/01/01		1		X	
Y		SECTION X-X		2020/01/01		1		Y	
Z		SECTION Y-Y		2020/01/01		1		Z	
AA		SECTION Z-Z		2020/01/01		1		AA	
AB		SECTION AA-AA		2020/01/01		1		AB	
AC		SECTION AB-AB		2020/01/01		1		AC	
AD		SECTION AC-AC		2020/01/01		1		AD	
AE		SECTION AD-AD		2020/01/01		1		AE	
AF		SECTION AE-AE		2020/01/01		1		AF	
AG		SECTION AF-AF		2020/01/01		1		AG	
AH		SECTION AG-AG		2020/01/01		1		AH	
AI		SECTION AH-AH		2020/01/01		1		AI	
AJ		SECTION AI-AI		2020/01/01		1		AJ	
AK		SECTION AJ-AJ		2020/01/01		1		AK	
AL		SECTION AK-AL		2020/01/01		1		AL	
AM		SECTION AL-AM		2020/01/01		1		AM	
AN		SECTION AM-AN		2020/01/01		1		AN	
AO		SECTION AN-AO		2020/01/01		1		AO	
AP		SECTION AO-AP		2020/01/01		1		AP	
AQ		SECTION AP-AQ		2020/01/01		1		AQ	
AR		SECTION AQ-AR		2020/01/01		1		AR	
AS		SECTION AR-AS		2020/01/01		1		AS	
AT		SECTION AS-AT		2020/01/01		1		AT	
AU		SECTION AT-AU		2020/01/01		1		AU	
AV		SECTION AU-AV		2020/01/01		1		AV	
AW		SECTION AV-AW		2020/01/01		1		AW	
AX		SECTION AW-AX		2020/01/01		1		AX	
AY		SECTION AX-AY		2020/01/01		1		AY	
AZ		SECTION AY-AZ		2020/01/01		1		AZ	
BA		SECTION AZ-BA		2020/01/01		1		BA	
BB		SECTION BA-BB		2020/01/01		1		BB	
BC		SECTION BB-BC		2020/01/01		1		BC	
BD		SECTION BC-BD		2020/01/01		1		BD	
BE		SECTION BD-BE		2020/01/01		1		BE	
BF		SECTION BE-BF		2020/01/01		1		BF	
BG		SECTION BF-BG		2020/01/01		1		BG	
BH		SECTION BG-BH		2020/01/01		1		BH	
BI		SECTION BH-BI		2020/01/01		1		BI	
BJ		SECTION BI-BJ		2020/01/01		1		BJ	
BK		SECTION BJ-BK		2020/01/01		1		BK	
BL		SECTION BK-BL		2020/01/01		1		BL	
BM		SECTION BL-BM		2020/01/01		1		BM	
BN		SECTION BM-BN		2020/01/01		1		BN	



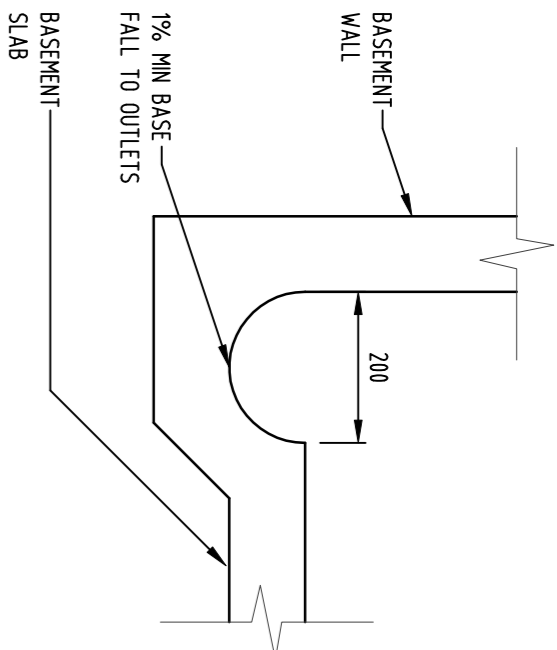
1
-
DETAIL
STEP IRONS
SCALE 1:10



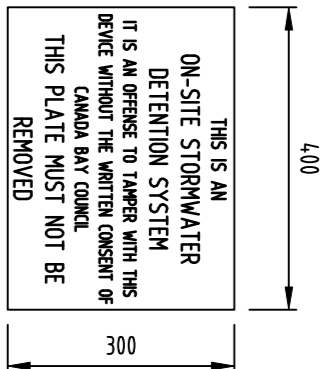
DETAIL
2
-
CONFINED SPACE SIGN
SCALE 1:10



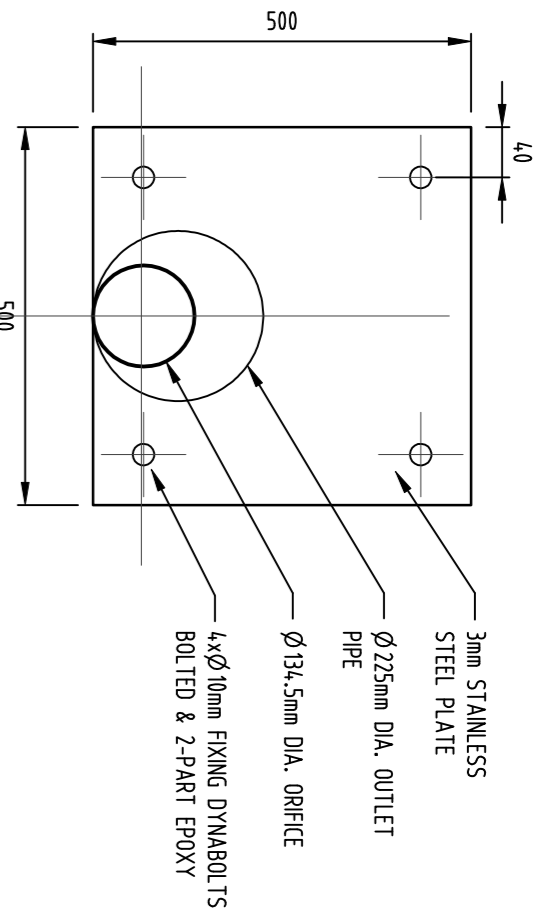
DETAIL
RAINWATER OUTLET
NOT TO SCALE



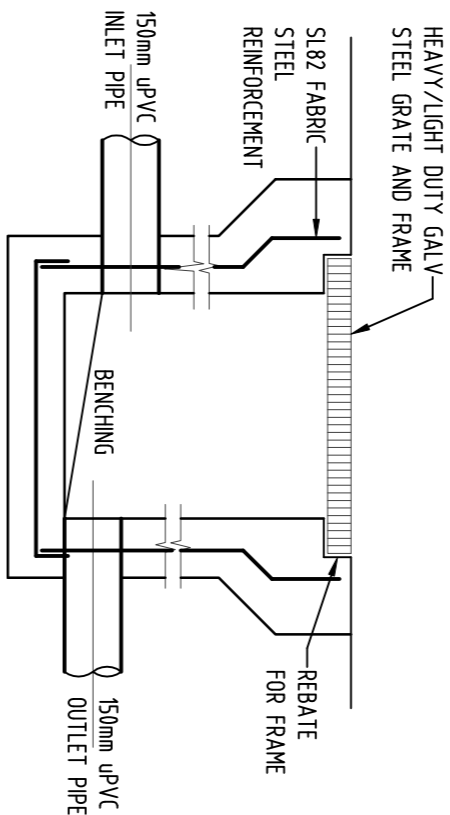
4
-
DETAIL
DISH DRAIN
SCALE 1:10



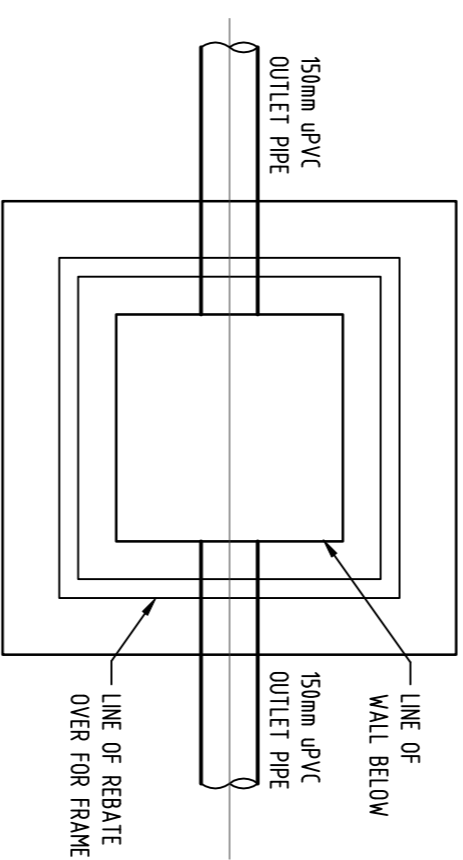
5
-
DETAIL
OSD SIGN
SCALE 1:10



DETAIL
6
-
OSD ORIFICE PLATE
NOT TO SCALE

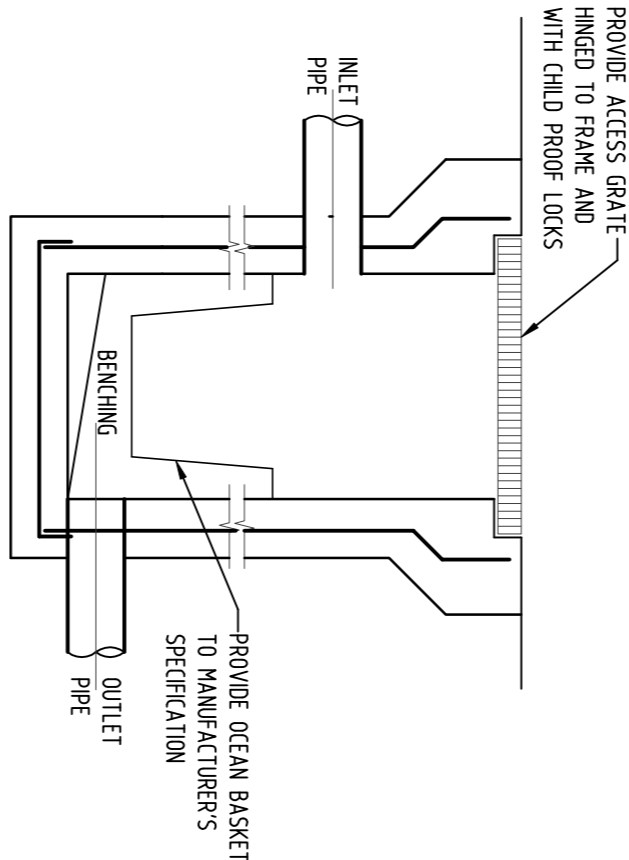


SECTION

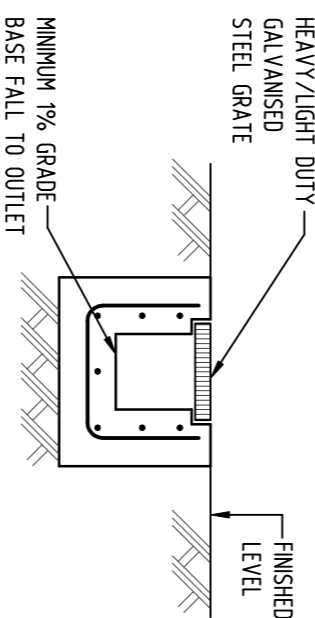


PLAN WITHOUT GRATE

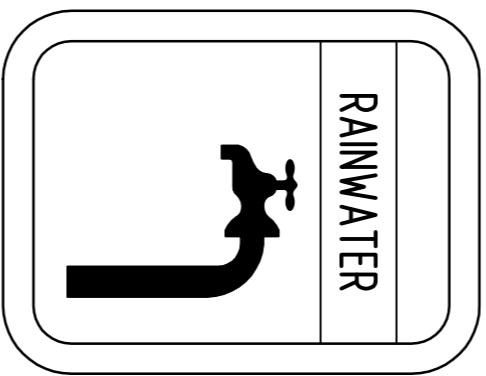
10 DETAIL



11 DETAIL

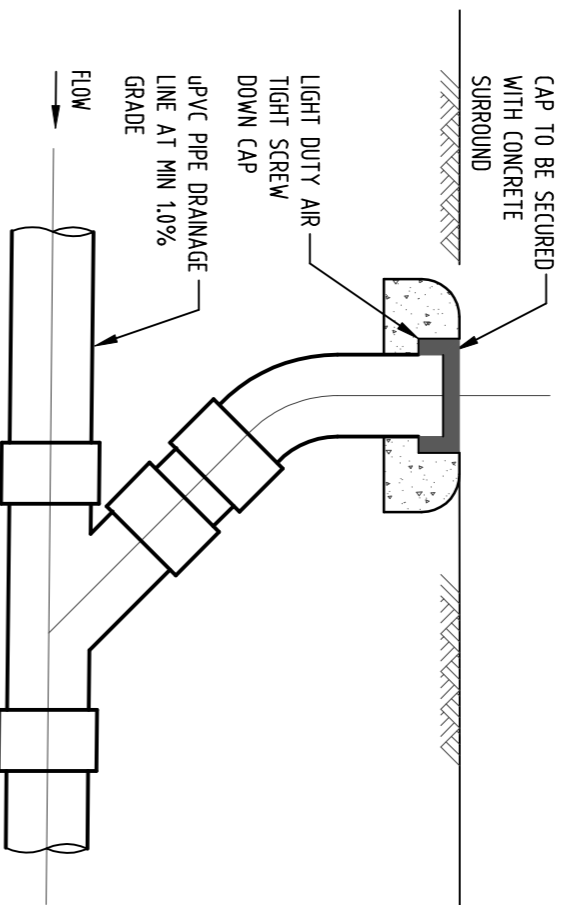


12 DETAIL

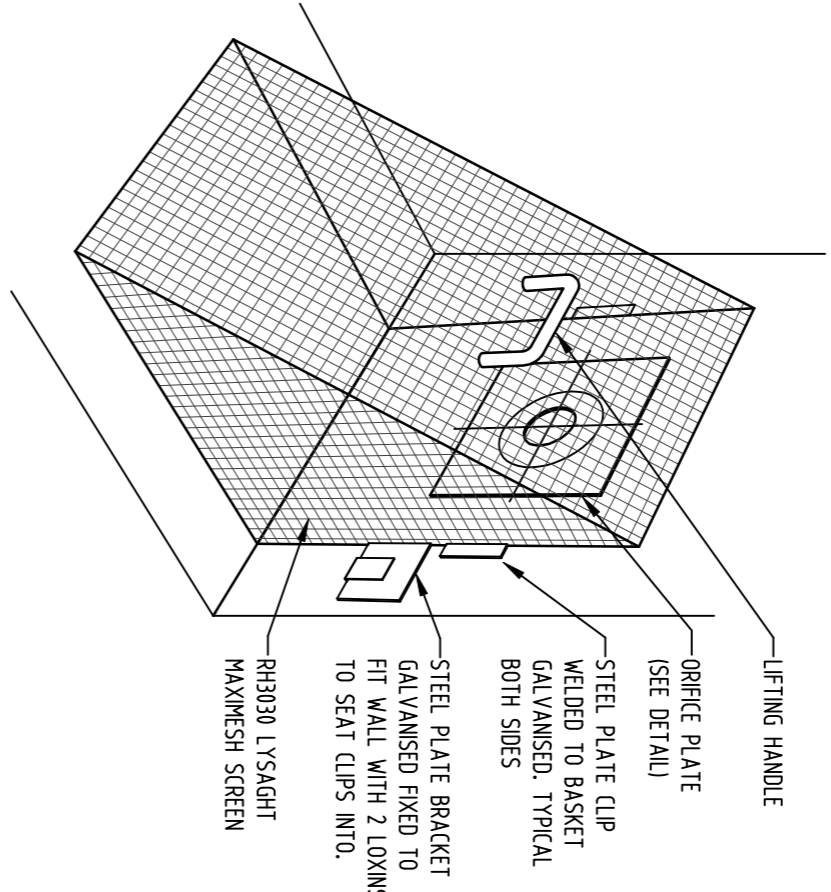


13 DETAIL

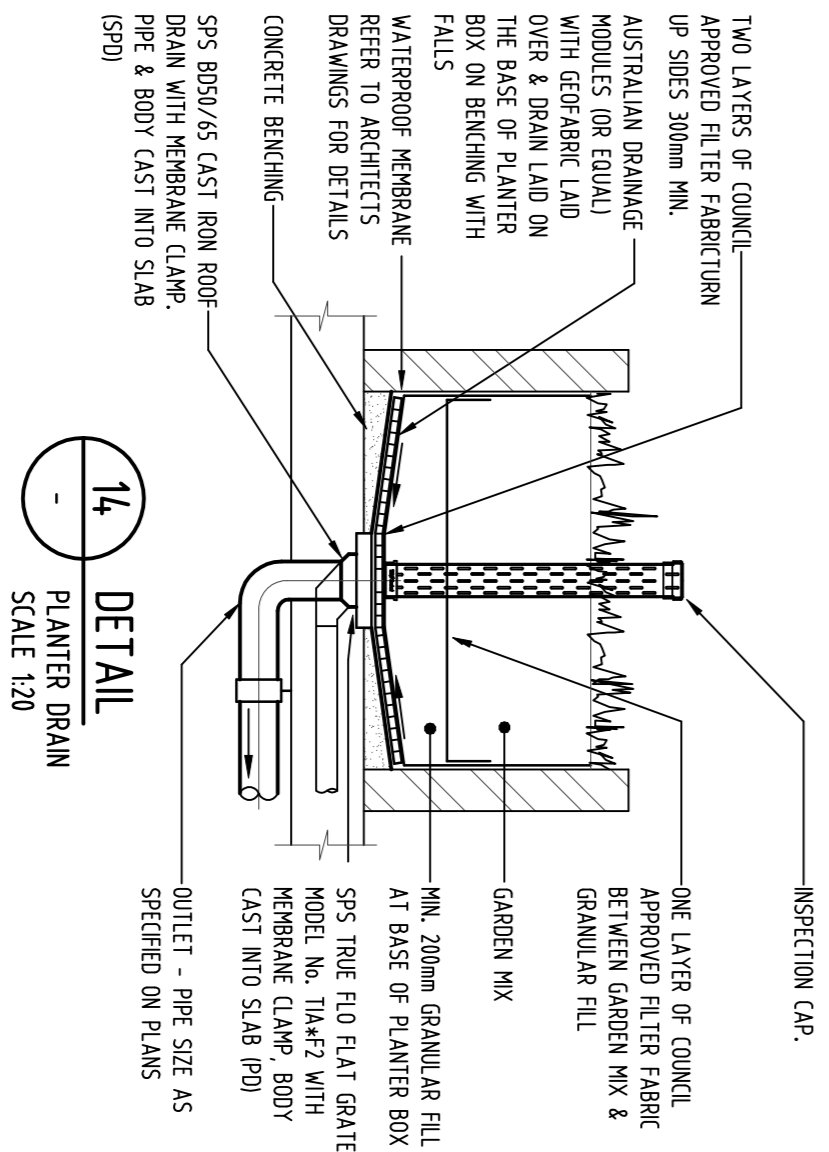
LEGEND:
BACKGROUND IS YELLOW
TEXT IS WHITE ON BLACK
BACKGROUND



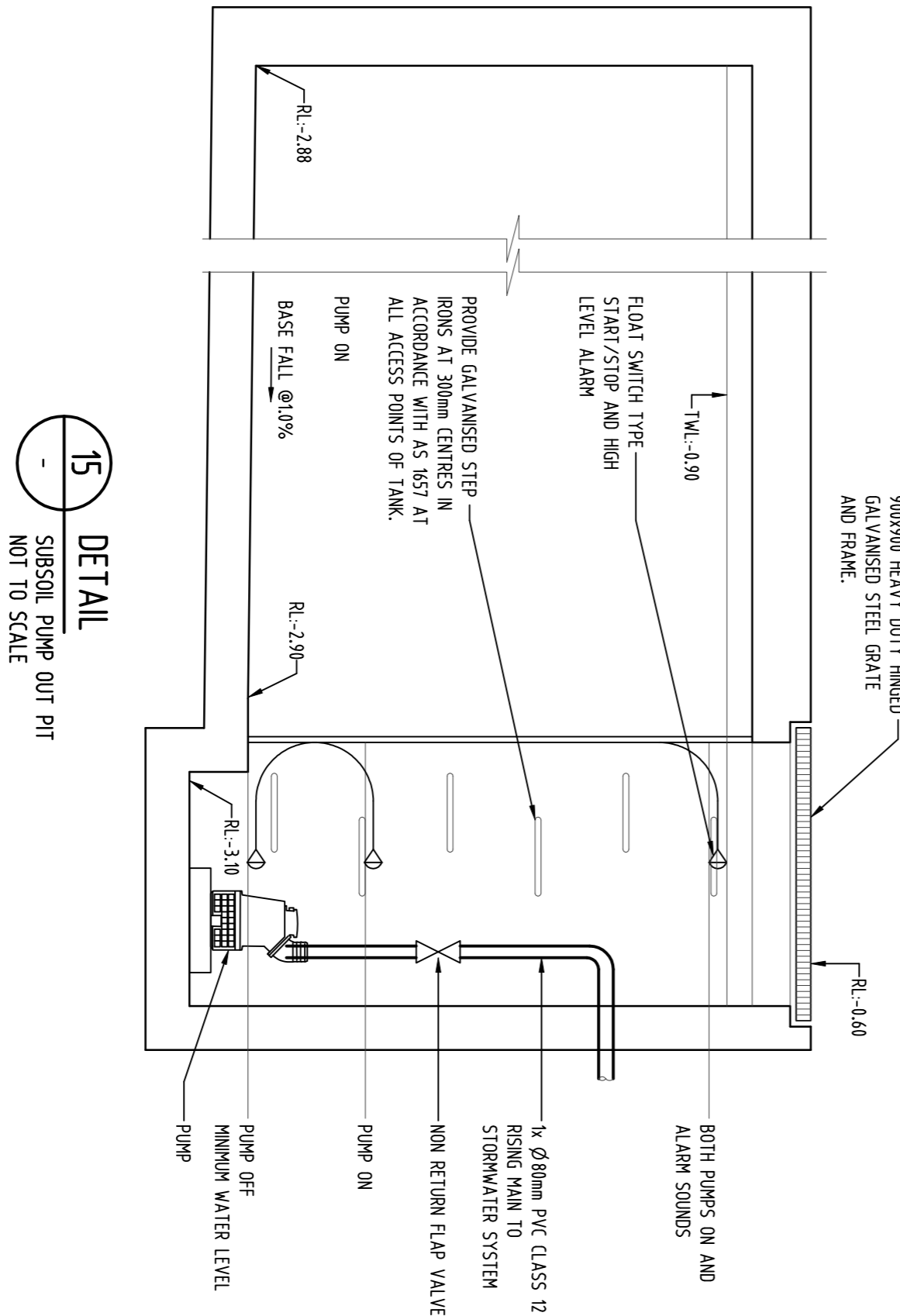
8
-
DETAIL
CLEANING EX
SCALE 1:10



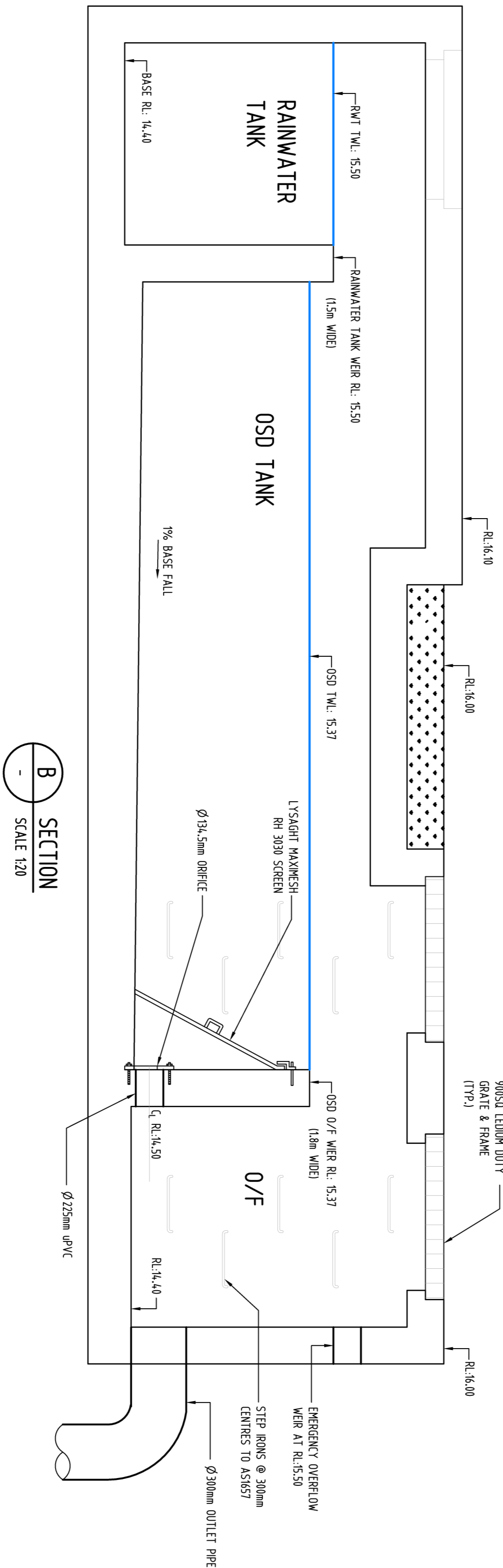
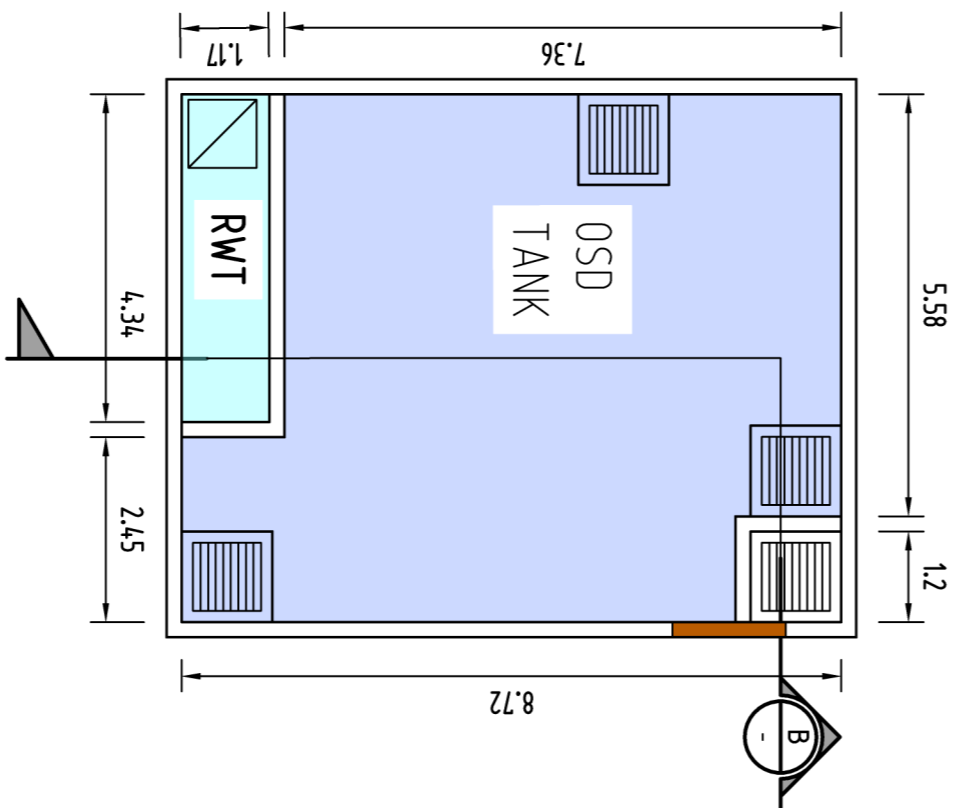
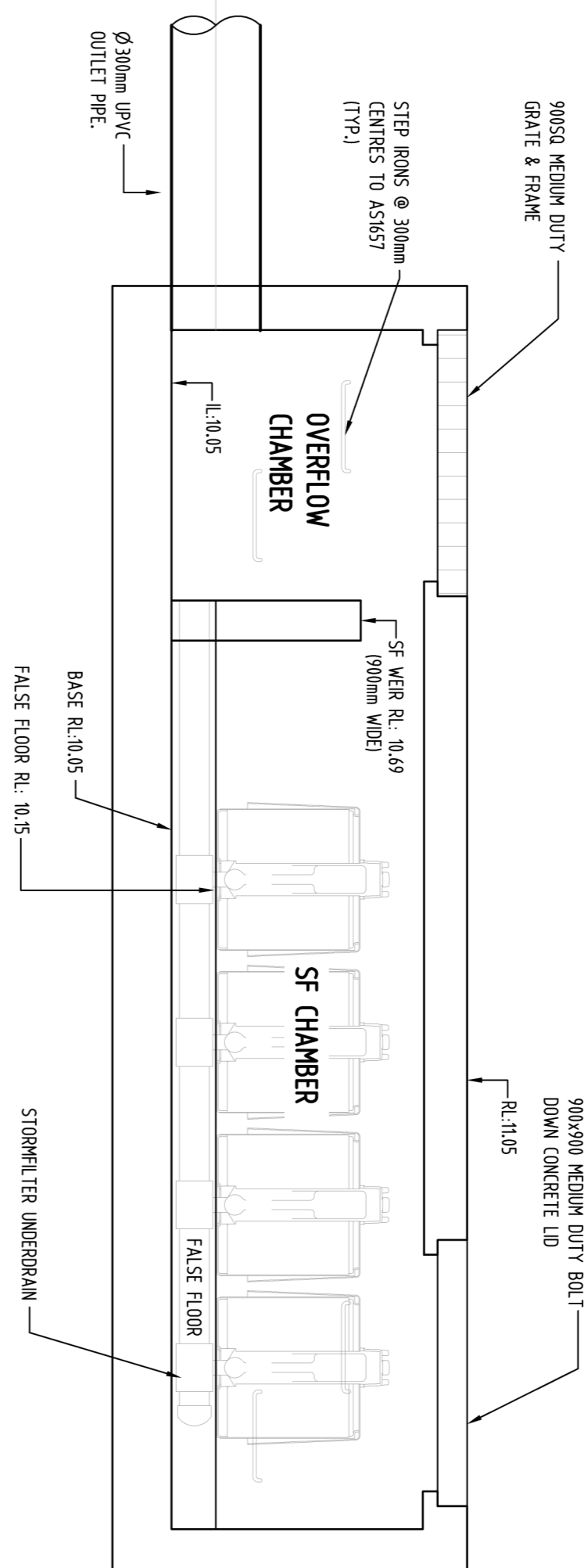
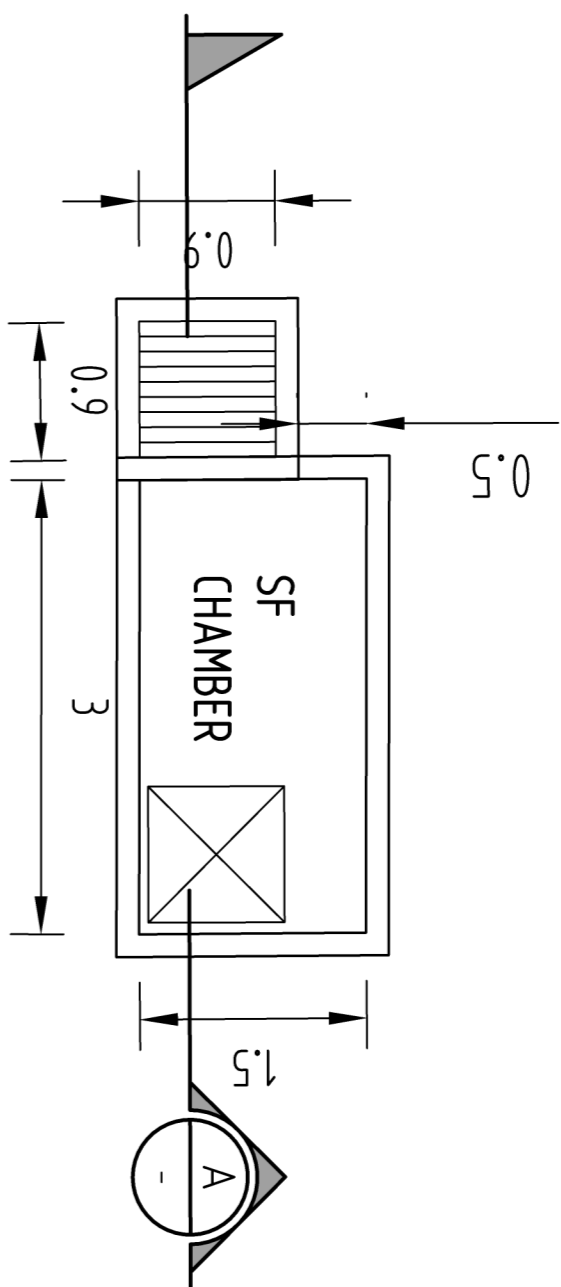
DETAIL
9
-
DEBRIS SCREEN
NOT TO SCALE

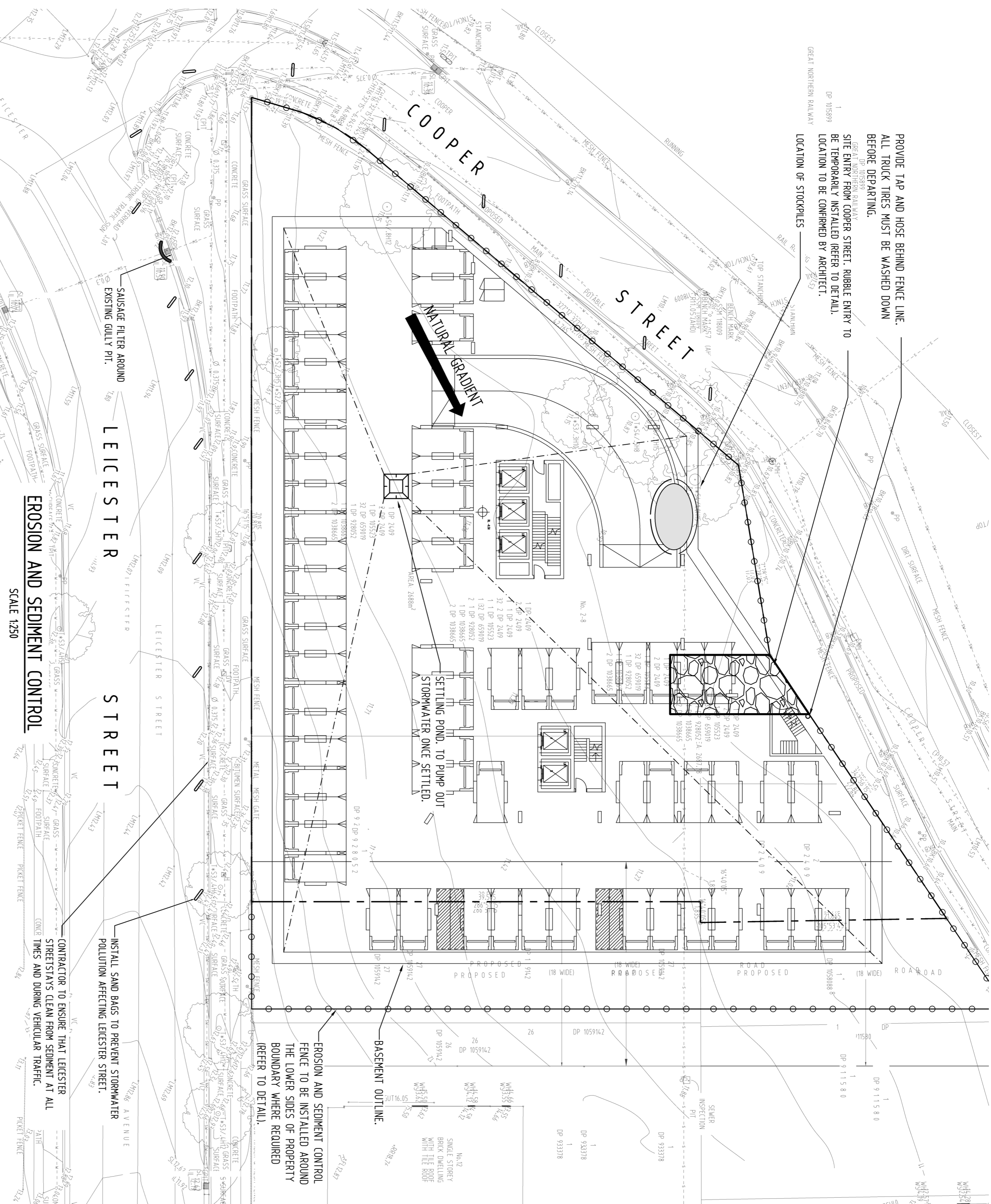


14
-
DETAIL
PLANTER DRAIN
SCALE 1:20

[illegible]

15
-
DETAIL
SUBSOIL PUMP OUT PITT
NOT TO SCALE

[illegible]



EROSION & SEDIMENTATION CONTROL

NOTES

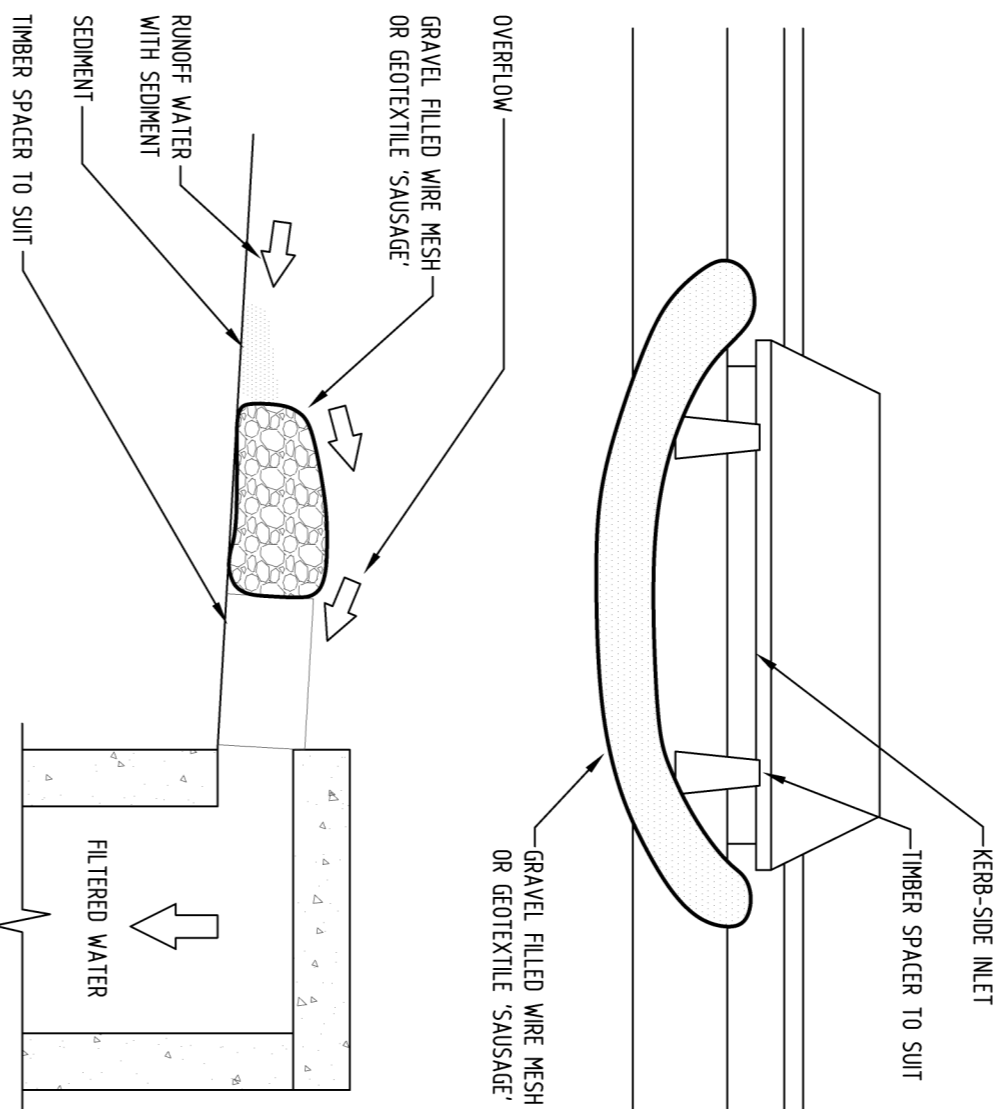
1. CONSTRUCTION SHALL PROVIDE SEGMENT FENCING MATERIAL DURING CONSTRUCTION TO THE LOW SIDE OF THE WORKS. THE SEGMENT FENCING MATERIAL TO CYCLONE WIND SECURITY FENCE, SEGMENT CONTROL FARRIER SHALL BE AN APPROVED MATERIAL (E.G. UNITS APPROX. SIX (6) FT. STANDING 300mm ABOVE GROUND & EXTENDING 300mm BELOW GROUND).
2. EXISTING BRANS LOCATED WITHIN THE SITE SHALL ALSO BE ISOLATED BY SEGMENT FENCING MATERIAL.
3. NO PARKING OR STOCKPILING OF MATERIALS IS PERMITTED ON THE LOWER SIDE OF THE SEGMENT FENCE.
4. GRASS VERGES SHALL BE MAINTAINED AS MUCH AS PRACTICAL TO PROVIDE A BUFFER ZONE TO THE CONSTRUCTION SITE.
5. CONSTRUCTION ENTRY/EXIT SHALL BE VIA THE LOCATION NOTED ON THE DRAWING. CONSTRUCTION SHALL ENSURE ALL DROPPABLE SOIL & SEDIMENT IS REMOVED PRIOR TO CONSTRUCTION TRAFFIC EXITING SITE. CONSTRUCTION SHALL ENSURE ALL CONSTRUCTION TRAFFIC ENTERING & LEAVING THE SITE DO SO IN A FORWARD DIRECTION.

GENERAL NOTES

1. THIS PLAN IS A CONCEPT PLAN ONLY, NOT SUITABLE FOR DISPOSAL & EROSION CONTROL. IT IS NOT SUITABLE FOR CONSTRUCTION. THIS PLAN SHOULD BE ADAPTED BY THE BUILDER DURING DEPOSITION, EXCAVATION & CONSTRUCTION PHASES TO ENSURE ADEQUATE PERFORMANCE.
2. ALL DRAINAGE LAYOUT & DETAILS ARE DIAGRAMMATIC & INDICATIVE ONLY. ACTUAL LOCATION, SIZES, LEVELS & GRAD MAY ALTER WHEN DETAIL DESIGN WORKS ARE DOCUMENTED.

CLAY SOILS

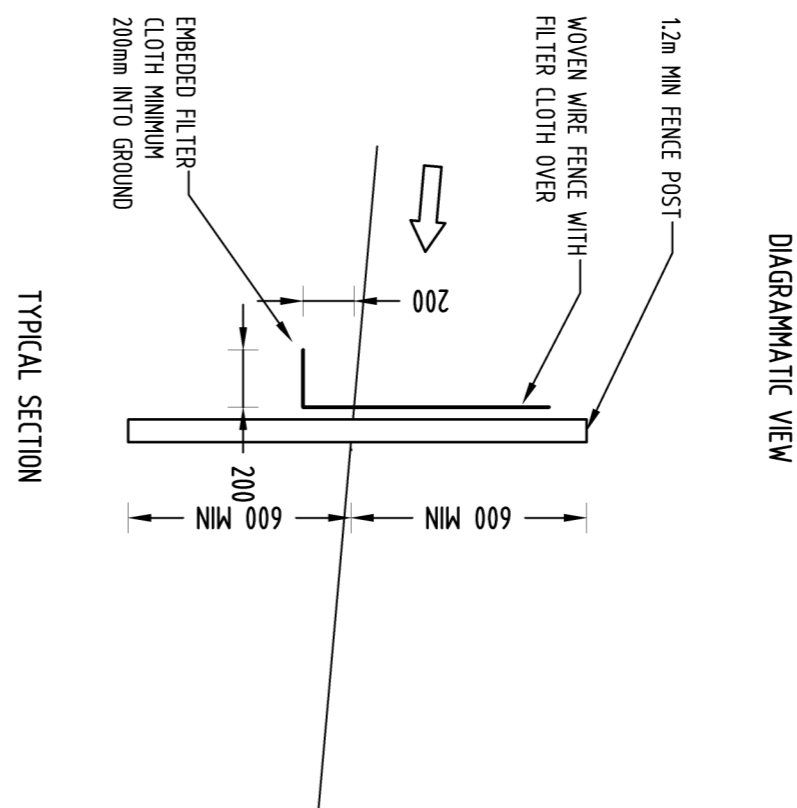
1. TRANSPORT STORMWATER RUNOFF WITH SUSPENDED SOLIDS FROM SITE VIA PUMP TRUCKS.
2. TREAT THE STORMWATER RUNOFF WITH SUSPENDED SOLIDS THE DISCHARGE WATER QUALITY TO COUNCIL STORMWATER DRAINAGE SYSTEM HAS A MAXIMUM CONCENTRATION OF SUSPENDED SOLIDS THAT DOES NOT EXCEED 50 MILLIGRAMS PER LITER IN ACCORDANCE WITH THE PROTECTION OF THE ENVIRONMENT OPERATION ACT (POTED 1997) AND SHALL BE APPROVED BY LOCAL COUNCIL



GRAVEL INLET FILTER (SAUSAGE)

NOT TO SCALE

- TO ALL KERB INLETS AT SAG POINTS
- MAINTAIN THE OPENING WITH SPACER BLOCKS
- FORM A SEAL WITH THE KERBING AND PREVENT SEDIMENT BYPASSING THE FILTER
- LEAVING A 100mm GAP AT THE TOP TO ACT AS AN EMERGENT SPILLWAY
- FILL THE SLEEVE WITH 25mm TO 50mm GRAVEL
- FORM AN ELLIPTICAL CROSS-SECTION OF THE KERB INLET
- ABRACATE A SLEEVE MADE FROM GEOTEXTILE OR WIRE MESH TO MATCH THE LENGTH OF THE INLET PIT

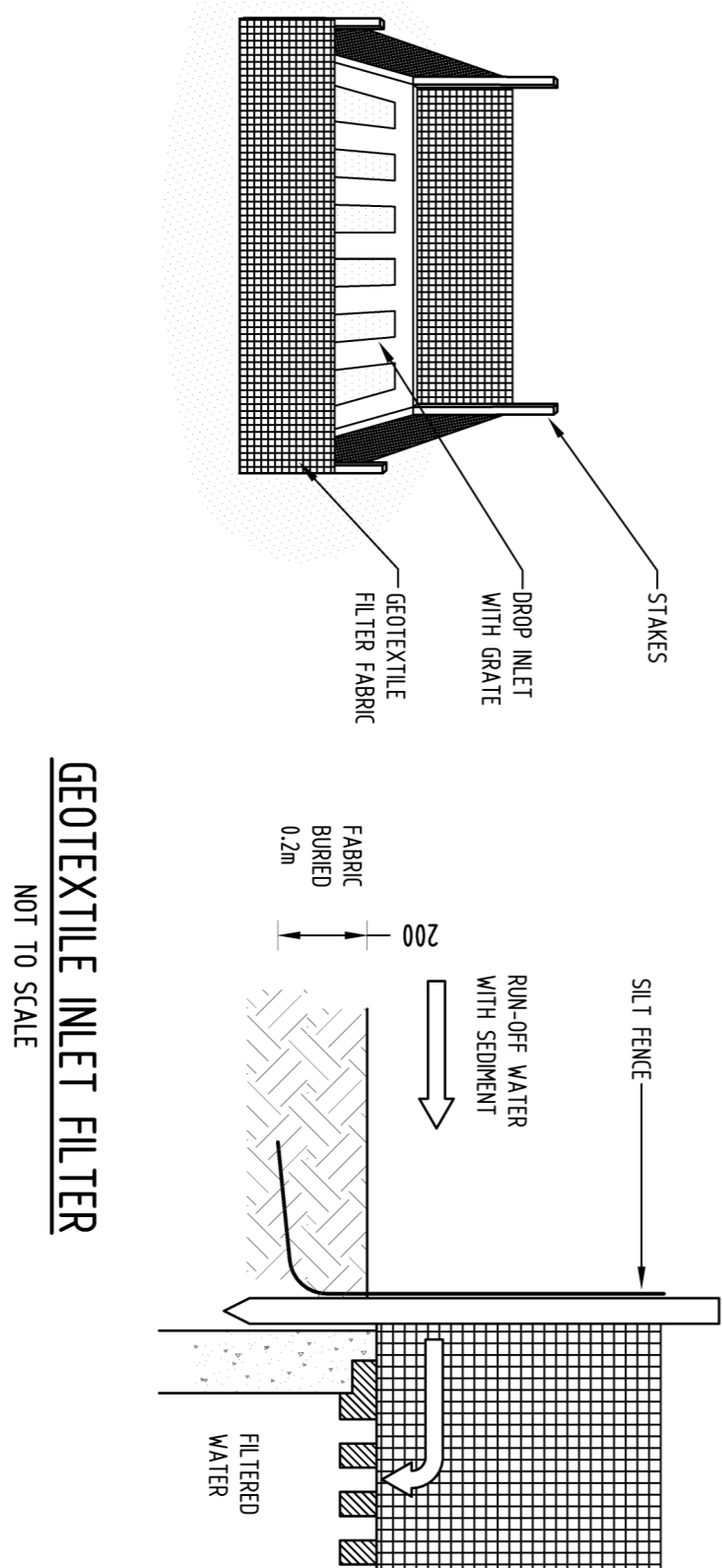


SEDIMENT FENCE

NOT TO SCALE

GEOTEXTILE INLET FILTER

GEOTEXTILE INLET FILTER IS PLACED IN EVERY PIT WITHIN THE SITE TO ENSURE THE RUNOFF WATER DURING CONSTRUCTION NOT ENTER THE PITS.



GEOTEXTILE INLET FILTER

NOT TO SCALE

[illegible]

